



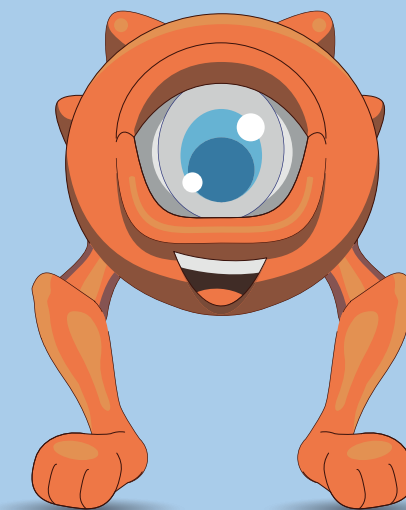
Before administering Hemlibra for the first time, you should read the package leaflet contained in the box with your medicine, the guide for patients/carers and patient card your doctor or nurse will have provided.

If you get any side effects, talk to your doctor, pharmacist or nurse. This includes any possible side effects not listed in the package leaflet. You can also report side effects directly via the Yellow Card Scheme at www.mhra.gov.uk/yellowcard. You should also report side effects to Roche Products Ltd by emailing the Roche Drug Safety Centre at welwyn.uk_dsc@roche.com or calling +44 (0) 1707 367554. By reporting side effects you can help provide more information on the safety of this medicine.

This item has been developed by Roche Products Limited and Chugai Pharma UK Ltd

HOW TO ADMINISTER **HEMLIBRA**[®] (emicizumab)

Your step-by-step guide to injecting Hemlibra subcutaneous injection comfortably using the acronym PARIS



Job code: M-GB-00015895
Date of preparation: March 2024

Administration advice

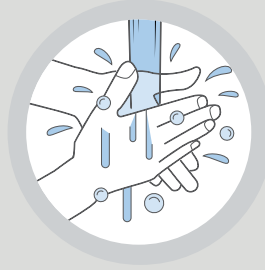
Set a reminder on your phone or computer to remind you to take your Hemlibra and follow these simple steps during administration.



Remove vial(s) from fridge about 15 minutes before use. Check the expiry date and check the liquid in the vial is clear and colourless or slightly yellow. Do not use the vial if the liquid is cloudy, hazy, discoloured or contains any visible particles.



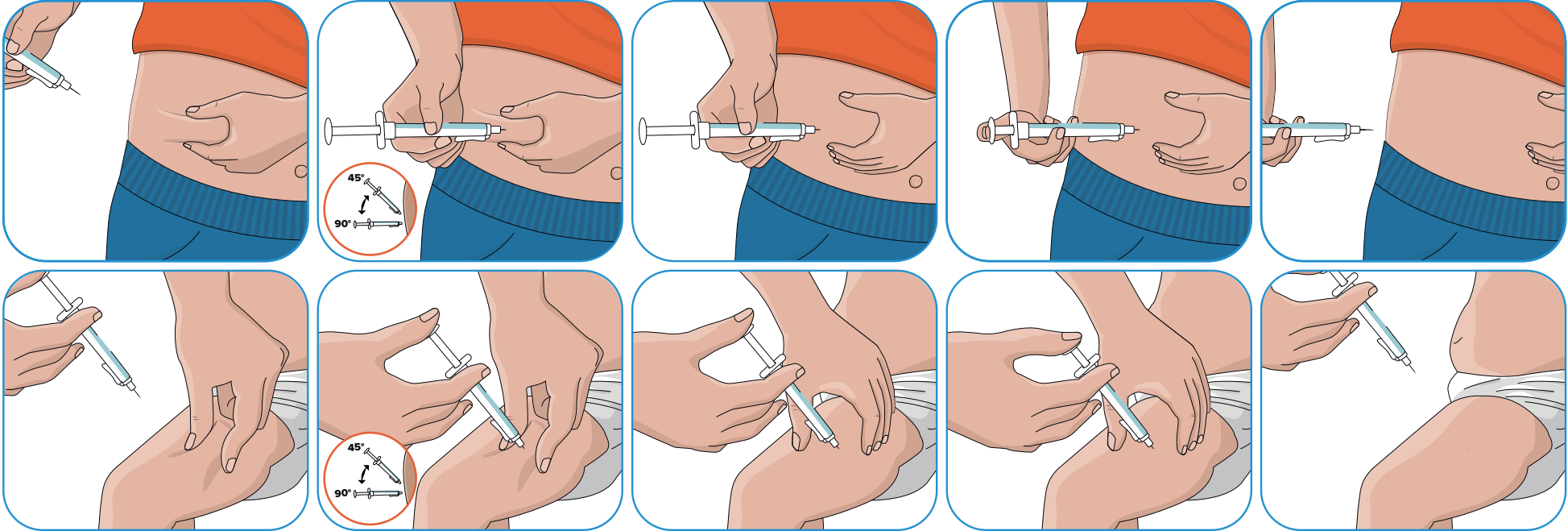
Place on a flat, clean surface out of direct sunlight. After about 15 minutes the vial(s) should have reached room temperature and will be ready to use.



Wash your hands well with soap and water before preparing and injecting Hemlibra.

P A R I S

PINCH ANGLE RELEASE INJECT SLIDE



Pinch the skin at the selected injection site.

Angle the needle at 45° to 90° and insert with a quick, firm action. Do not hold or push on the plunger while inserting the needle.

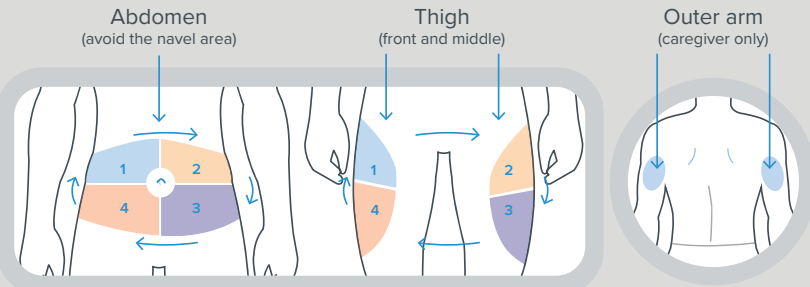
Release the pressure between the pinched skin whilst holding the syringe still, in the same position.

Inject all the prescribed dose slowly by gently pushing the plunger all the way down.

Slide the needle gently out from the injection site at the same angle as inserted.

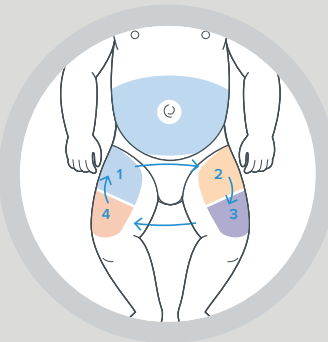
Rotating injection sites

The recommended injection sites are the abdomen and thigh. Additionally, the outer arm, when administered by a caregiver.



These sites are recommended because they have an easily accessible area of fatty tissue just below the skin. Self administration is not recommended for children below 7 years of age. Your doctor or nurse can help you decide if you can inject Hemlibra yourself.

In a study of infants, 8 out of 10 injections were given in the thigh.¹



Avoid injecting into:

- Areas that could be irritated by a belt or waistband
- Moles and scars
- Skin that is bruised, tender, red, hard or broken
- The navel and 5 cm around it

1. Pipe S, et al. Blood 2023; blood.2023021832.